

VISUCAM Fundus Imaging

Excellent clarity, ultra-high resolution,
legendary ZEISS optics.

The new ZEISS VISUCAM fundus camera with a 24-megapixel sensor produces brilliant, detail-rich images to effectively aid in diagnosing and monitoring a broad range of eye diseases – from glaucoma and diabetic retinopathy to AMD.

Greater diagnostic insight –

High-resolution fundus imaging

Versatility –

Fully-featured camera with a full spectrum of imaging modes*

Enhanced practice performance –

Simple design, user friendly, full integration with clinic workflow

Setting a new standard for resolution

Details define your decisions

Ultra-high resolution and excellent clarity promote efficient navigation from full-image overview to magnification of the smallest detail, allowing precise visualization within a particular area of interest.

Fundus autofluorescence (FAF)

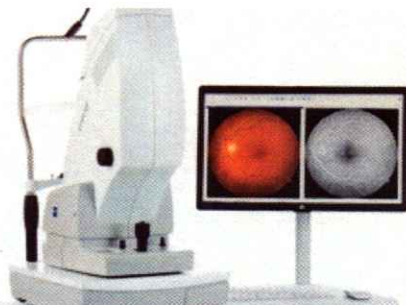
FAF, included on both VISUCAM models, is an important non-invasive tool for the diagnosis and monitoring of dry AMD, including geographic atrophy.

More than a pretty picture

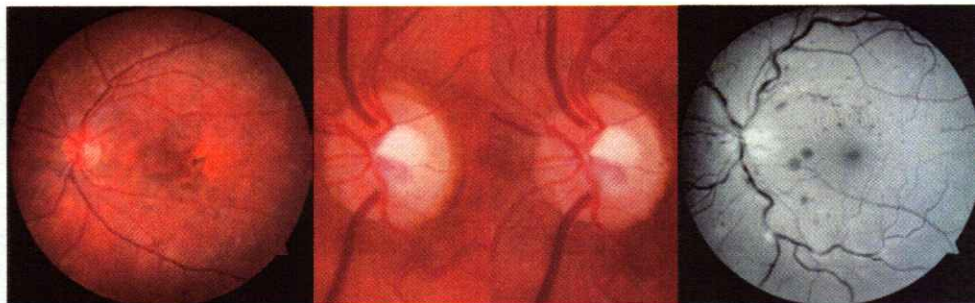
VISUCAM is a complete system with numerous on-board image capture modes – fundus autofluorescence, non-mydratic Color, Red-free, Red, Blue – and visualization functionality that provide powerful diagnostic insights for optimal patient care.

Advanced features such as fluorescein angiography and indocyanine green angiography* further extend its diagnostic applications.

* Available only on VISUCAM 524



VISUCAM Fundus Camera with
24-megapixel Sensor



Color

Stereo image pair

Red-free